

i3DVR produces advance solutions for digital quality images based around technological integration methods. These systems are POS and Card Access ready with remote-site viewing, recording and two-way audio via LAN, WAN or PSTN.

For more detailed information & specifications click onthe pictures of the products.

i3DVR's Veo Embedded DVMS diverges from our integrated systems in two key ways: First, it operates on a Linux based embedded operating system; second, the DVMS software is contained as read-only firmware on a chip. Both these features make the embedded system extremely stable, ensuring that data on the hard disk is secure.

What's more, Veo features an embedded processor and custom operation system that digitizes analog video signals and stores them on a internal HDD. Using MPEG4 compression technology, the system produces quality video data that can be backed up to DVD-RW or USB drive, or even accessed and downloaded over a local area network (LAN) for remote viewing. Veo supports a maximum of 4 channels of video. Each channel can be compressed independently, allowing you to simultaneously control your entire camera infrastructure.

The Veo 12008N is an affordable entry-level digital surveillance video recorder running on a popular embedded operating system. The system serves a niche market which requires more than the 4 basic camera inputs enabling fast frame rate recording, powerful playback, searching, and exporting capabilities from up to 8 cameras. It's a powerful replacement for the traditional VCR system which will revolutionize the way you secure your business assets.

Video can be viewed remotely or on a local area network with audio. MPEG4 video compression improves image viewing remotely and enables viewing multiple sites as well, a feature greatly in demand on the market. Managers can chose between the traditional composite monitor or a VGA to view live video, which means that existing equipment can still be used. Local users can back up video via CD/DVD or with a USB thumb drive.

The front panel of the system uses buttons allowing simple navigation through Veo s menus. The Veo 12008N is built with flexibility and adaptability in mind.

It assures protection against anti-viruses and prevents video alterations, a guaranteed high performance system that is made for the professional. A built-in S.M.A.R.T. alarm indicator will auto-detect and monitor your hard drive s condition as well to give you peace of mind. Managers can also hide live video and playback while still being in record mode. For franchisers with multiple sites, a standardized configuration setup can be saved to a USB thumb drive and transferred to various systems in the field.

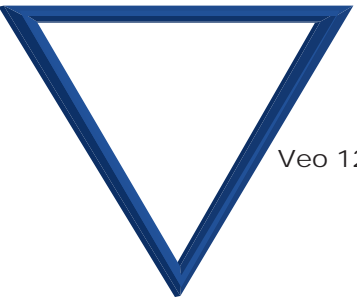
The IP-Pro software is your all-in-one solution to a better surveillance system! Its ease of use complements i3DVR s SRX-Pro, hybrid DVR systems. The ease of search for video and the integration with POS while utilizing a variety of IP cameras made the IP-Pro software powerful IP surveillance software. Each camera can be configured independently for frame rate, resolution, compression format, recording mode and storage location.

This IP-Pro software is unique in the sense that it s capable of accepting multiple video streams from MJPEG, MPEG4 and H.264. It accepts both video and audio data streams received over the Ethernet network using TCP/IP protocol. The IP-Pro software relies on IPP00C-00-00 Compact Server, IPP00RA-00-00 Rackmount Server, IPP00RB-03-00, and IPP00RB-07-00 Rackmount Server to perform and receives/compressed data streams generated from a variety of integration partners or i3DVR's manufactured encoders such as the ANNEXXUS products. It indexes the data streams, and then transfers the data streams to internal hard disk storage (RAID Level 5 or non-RAID) with a maximum of 9 TB or 8 TB.

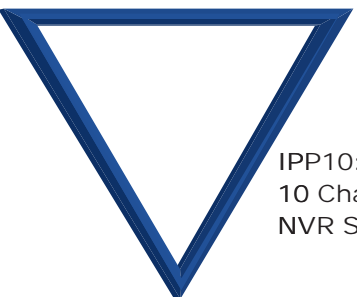
Most importantly, it interfaces very well with i3DVR s mega-pixel, Annexxus 301C2M, 301D2M, & our IP Ax301C cameras or with our integrators cameras. All of these new technologies are very flexible and provide excellent features that will allow small-medium-enterprises to create a complete video surveillance system with ease.



Veo 12004N



Veo 12008N



IPP10:
10 Channel
NVR Software



SRX PRO Lite



SRX-Pro Lite
12010/12016

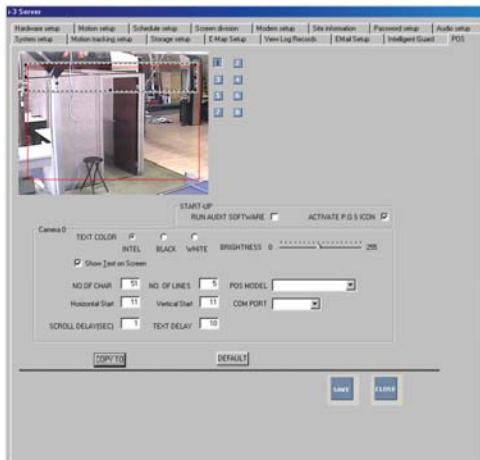
The ProLite compact DVMS provides a complete turnkey solution to your data management needs. The intelligence of this series supports multiple functions and is available in a variety of configurations. Available with 10 or 16 channels of video and 120 fps recording and full loop out, this Compact Wallmount system is ideal for small and medium sized business and retail applications.

SRX PRO UltraLite



SRX-Pro
UltraLite
6010/6016

Using MJPEG compression technology, this entry-level system produces high quality digital video that can be backed up to DVD-RW, USB drive, or even accessed and downloaded over a local area network (LAN) for remote viewing and playback. Supporting a maximum of 16 channels video, each channel can be compressed independently, allowing you to individually control each camera. The series is also upgradeable to 1-channel of POS for small retail applications.



ANNEXUS Megapixel

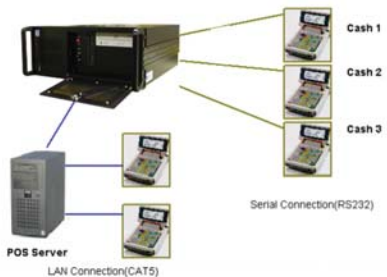
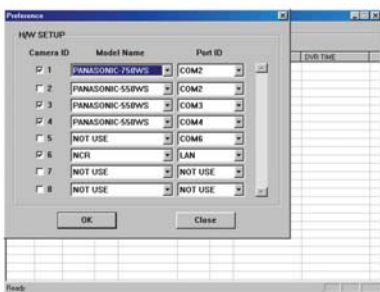


Annexus
MegaPixel
Dome Camera

The i³ development team is launching a revolutionary network camera, the Ax301 D2M Network Color Dome!

This two (2) megapixel camera with vandal resistant (1000 kg) and waterproof (IP67) features belongs to our arsenal of Network Video Recording (NVR) iP-Pro solutions. The Ax301D2M captures high resolution images at 1600x1200 pixels and permits dual stream video in various resolutions. The Ax301D2M also offers 2-way audio and the convenience of power over Power Over Ethernet (PoE). At i³DVR, we believe in giving you more for less and making your technologies work for you!

Our cameras have been tested by experts who understand the rigorous conditions of your business. We wouldn't want it otherwise because we believe that partnering with the right people gives i³ DVR a technological advantage that helps build trusting relations.



3-Axis Indoor
Dome Camera

The latest addition to i³DVR camera line is the Messo. The SDF445PRO comes with Lumii (lux inimum) Technology. This has enabled the camera to increase TV lines improving resolution and lower the lux to see better at low light condition. Video is now much more distinctive as common noise is dramatically reduced with higher sensitivity.

The SDF445PRO is an indoor dome camera. The SDF445PRO camera is a high-end digital state-of-the-art color camera with 560 TVL of resolution. The SDF445PRO incorporates Sony CCD Chip technology and is a cost effective and reliable solution to your surveillance and security needs. The SDF445PRO is a great introduction camera and cost effective.