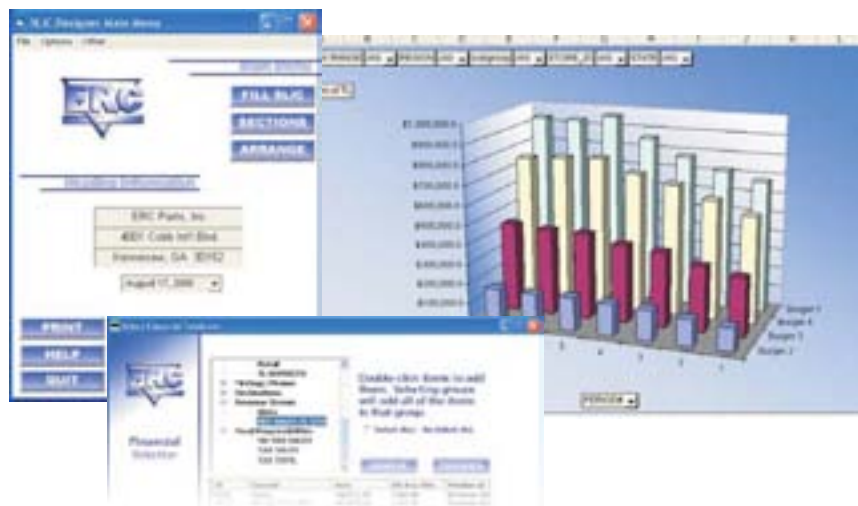




ERC BACK OFFICE SOLUTIONS...



2	WEEK RANGE	(All)
3	BUS DATE	(All)
4	STATE	(All)
5	STORE ID	(All)
6	MONTH RANGE	(All)
7	REGION	(All)
8	ERC ID	(All)
9		
10	PERIOD#	NETSALESTOTX
11		\$7,106,746.82
12		\$6,662,433.81
13		\$6,679,595.05
14		\$6,107,480.05
15		\$5,754,804.84
16		\$5,097,055.74
17		\$4,610,527.22
18	Grand Total	112,026,943.81
19		
20		
21		

Over the past 25 years ERC has earned the reputation as a company that has the ability to react to the requirements of its customers and develop proven, timely, economical products that will enhance performance and profitability for them. No product is more evident than the pioneered software solution of the ERC Back Office Suite of Applications consisting of **Sales Labor Inventory Control (SLIC)** which accumulates data at store level, the **Watchdog** which receives and protects this data off-site for all locations, and the **Reporter** which provides global reporting and other multi-store data needed to make sound business decisions.

The **SLIC** Application works at store level to create the report known as the "**SLIC Report**" In addition to allowing full control over the report details, this application prints, stores, e-mails the reports and provides alternate transportation and packaging methods of the data for omni store reporting capabilities.

- Alerts ERC Support Center when vital files and closing procedures fail
- Graphic User Interface (GUI) allows simple customization
- Customized Reporting for all key areas of P&L i.e. Financial, Sales, Labor, Inventory, Menu Items
- Flexibility as to recipients, frequency, and contents of e-mail packages
- Efficiently automates end-of-day/week/ period closing procedures
- Encrypted backup sales data
- Custom fiscal schedules abilities (monthly, fixed-day report)
- Currently works with Panasonic POWER and SMP data

SUPERCHARGE YOUR SLIC!

Ask Your ERC Representative About These Remarkable Back Office Solutions!



WATCHDOG OFF-SITE SECURITY



4001 Cobb International Blvd., Kennesaw, GA 30152
800.241.6880, www.erconline.com



ERC BACK OFFICE SOLUTIONS...



The *Reporter* Application grants you the ability to manipulate all system data into scores of defined reports that create a more significant representation of your overall operation. This multi-faceted application has basic, store-level and enhanced features that generate outstanding results.

The Basic Features are:

- Creation of multi-dimensional Excel reports using *Watchdog* data
- Obtain RAW data in Excel format
- Ability to create proprietary reports using *Watchdog* data
- Offline Mode: View previously retrieved reports without being on Internet
- All files/reports retrieved, compressed, stored and encrypted on local PC.
- Interact with other *Reporters* by sending Updates, Company Announcements, and shared files for Quarterly Reports and Instructions
- Allows direct, encrypted communication with *Watchdog*
- Most features can be disabled for security purposes

The Store Level features are:

- Obtains multitude quantities of *SLIC* reports
- Pulls massive data in seconds
- Mass printing or compression and storage of *SLIC* reports
- Broadcasts documents, updates, company-wide notices to all stores
- Monitoring tools for notification and obtaining missing files
- Alert to Support Help Desk concerning end-of-day closing problems

The Enhanced features for both the *Reporter* and *Watchdog* are:

- Open/Run files received from FTP
- Automatic update of *SLIC* Application
- Backup of application and transport to FTP (Power & Broadband only)
- Overwrite existing files with updated files

Tie Your Store Data Together With **WATCHDOG** OFF-SITE SECURITY



The Central Server Application (*Watchdog*) functions in the manner that it implies. It watches over and guards all of your valuable information off-site from the stores until you decide what and how you need it extracted. It maximizes the information received from the FTP server and disseminates that information based on the inquiries placed. The capabilities of this function are enormous and the following are some indications:

- Off-Site backup of valuable data
- POS Data routed to protective folders within seconds upon receipt
- Establishes storewide databases files for Financial, Sales, Labor Menu data
- Report building engine efficiently builds up to 10 reports simultaneously
- Forces "required store processes" to begin upon daily connection
- Processes and furnishes requests by *Reporter* application
- Reports on POWER & SMP stores as if the same POS System
- Receives and Stores data from the FTP enabled locations

