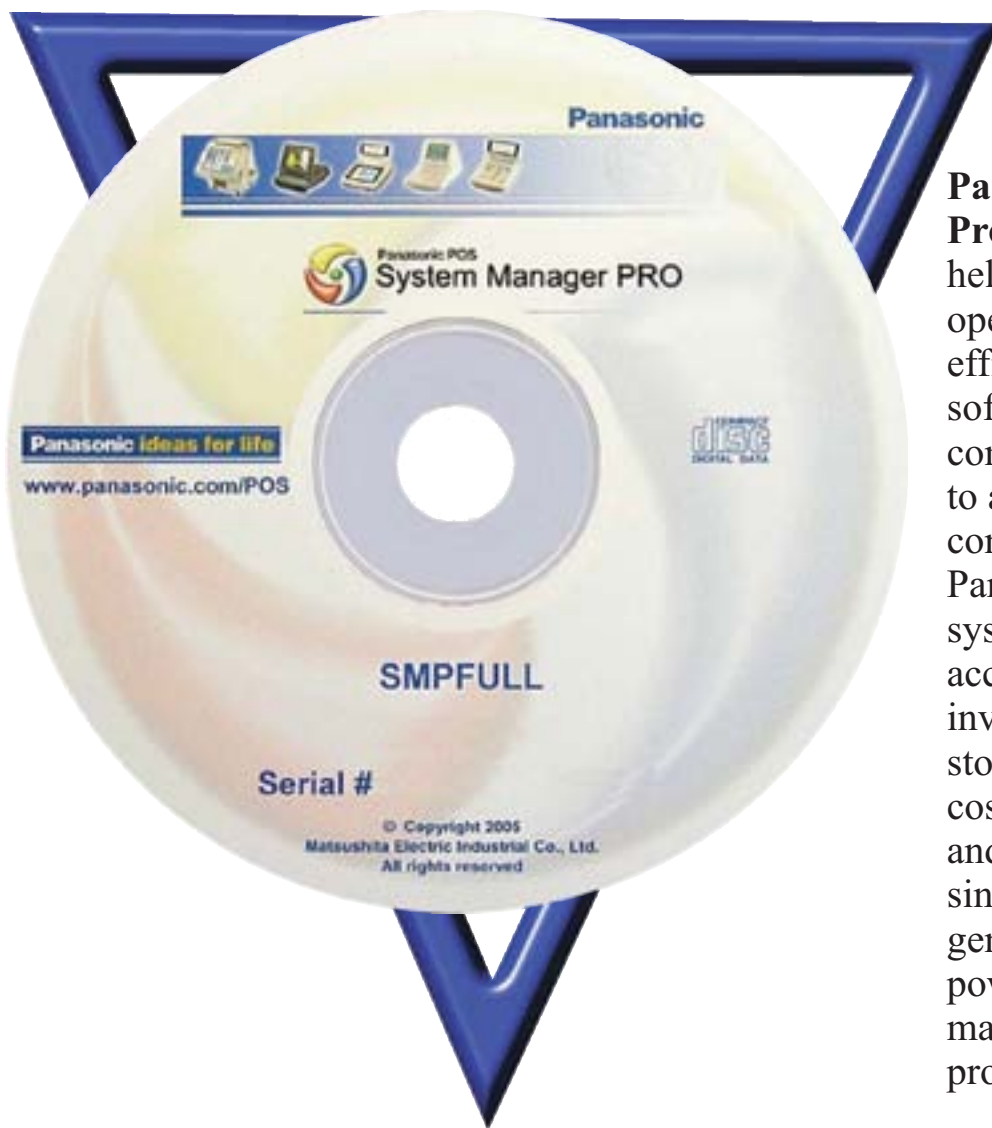




Panasonic's System Manager Pro Software Suite v3.5

P.O.S. SALES • SERVICE • SUPPORT • SOFTWARE • SURVEILLANCE • SUPPLIES

Make Every Day More Productive And Profitable.



Panasonic's new System Manager Pro (SMP) Software Suite v3.5 helps you manage your daily operations easily and more efficiently than ever. It's a powerful software solution that bridges communications from front-of-house to any remote location for consolidated management of Panasonic purpose-built POS systems. SMPv3.5 allows you to access vital information on inventory planning, purchasing and storage, employee scheduling, labor cost, time and attendance regulation and POS operations. All from a single platform with versatile report generation capabilities. It's a powerful management tool that can make every business day more productive and profitable.





Panasonic's System Manager Pro Software Suite v3.5

P.O.S. SALES • SERVICE • SUPPORT • SOFTWARE • SURVEILLANCE • SUPPLIES

Powerful & Versatile Features

- A Dashboard feature shows real-time status of labor, sales and speed of service.
- Easily programmed combo meal function allows automatic pricing and substitutions to show improved order accuracy and speed of service.
- Item maintenance and data is easily communicated to all Panasonic POS systems in your operation – even mix and match workstations.
- The online help system, including pictures, detailed procedures and tips, and helpful hints, is available at the press of a button to save you time.

Detailed Reporting

- Flexible reporting features such as user-defined day summary reports and expanded electronic journal search make daily tasks fast and efficient.
- On-the-fly, real-time sales data provides more accurate reporting with storage and retrieval of all program and historical data.
- Daily report wizard delivers easy, highly customizable, all-in-one reports to manage important aspects of your business:
 - Create hourly, daily, weekly, monthly, year-to-date and user-defined reporting periods.
 - Drag and drop to set up dayparts from pre-set minute increments to meal segments for closer labor monitoring.
 - Maintain cash accountability with cashier reports reflecting consolidated activity at all workstations.
- User-definable journal data reporting with Electronic Journal includes alpha/numeric search capability for greater research flexibility.

Time & Attendance Features

- Time-saving click and drag employee scheduling.
- Multiple calendars and real-time staffing guidance helps enforce federal/state labor regulations regarding minimum breaks.
- Standard weekly, bi-weekly and semi-monthly reports, including overtime.
- Enforce local minor labor laws with flexible schedules and functions to alert managers when employees are approaching violation or overtime.

Inventory Features

- Detailed recipe values allow accurate, real-time inventory counts, including recipe usage and waste to efficiently track primary ingredients and storage areas.

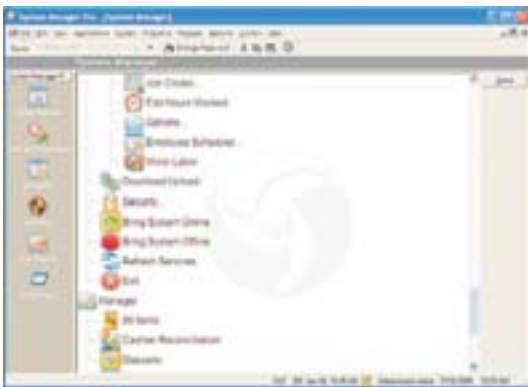
- Track multiple vendors, print reorder reports and purchase orders as needed.
- Purchase order feature generates items to order by vendor to easily replenish store stock.

System Support

- Compatible with Panasonic 9000, 7800, 7750, 7500 and 5500 POS Systems.
- SMP v2.0 supports multi-brand concept/store operations allowing multiple profit center and destination totals, and expanded menu capabilities.

Corporate System Manager Pro (CSMP)

- CSMP is an Above Store information data gathering and reporting tool for SMP v3.5.
- Collects multiple stores' daily information and filters it into a single point.
- Provides data editing and reporting capability.
- Employs a very reliable method of pushing store data into a single database via the Internet or other IP connection, helping you to produce information and make accurate operating decisions.
- Offers PLU, Tax Table and Coupon editing via region, as well as corporate reporting by corporate, region or store, including added connection enhancements and expanded data editing capabilities.
- Allows corporate users to determine what data is maintained at corporate and what data can be maintained at the store.
- Enables users to produce company, regional or store reporting, including Financial, Production, Inventory, and Time and Attendance reports.
- Produces a side-by-side comparison report of any specific store's financial data within a region.
- Push technology through .NET® web services ensures no "missed polls". The franchisee can push data from store to corporate multiple times per day without store interruption to get real-time status of enterprise operations.
- Edit data quickly from anywhere using just a web browser. No need to sit at the corporate PC to change the price of a PLU.
- Access reports for stores and regions via the Web. CSMP also provides a side-by-side comparison of stores to show how stores are performing.



System Manager Pro



Corporate System Manager Pro

